



CITY SCAPE



Your Roadmap to Transportation in Wentzville

**Whose Road
is That?**

**Project
Updates**

**Funding
Overview**

Insight into Infrastructure!

We are excited to present CityScape, your guide to the future City of Wentzville. This comprehensive resource is designed to inform you about the ongoing projects shaping our City's infrastructure and development. This guide will provide you with a brief overview of key projects, their benefits and how they impact our daily lives and overall community growth.

Why have we put this guide together? Simply put, we believe that an informed community is an empowered community. As Wentzville continues to grow and evolve, it is crucial for residents like you to understand the projects taking place and the long-term benefits they bring. By being knowledgeable about these endeavors, you can make informed decisions and actively participate in shaping the future of our City.

What can you expect from this guide? It serves as a snapshot of the significant transportation and construction projects happening in Wentzville. We have carefully selected a range of projects that impact different aspects of our daily lives. From road improvements to connectivity enhancements, each section provides a brief overview of projects currently taking place in our community.

In this guide, you will find updates on projects such as the David Hoekel Parkway project, Wentzville Parkway South extension and the reconstruction of the I-70/S-Curve. These projects aim to enhance traffic flow, improve safety and accommodate our growing community's needs. We have included before and after photos, project schedules and information on how roads are selected for these projects.

Additionally, we want to keep you informed about the maintenance and repair efforts happening in our City. You'll find information on annual slab replacements, pavement maintenance budgets and outside funding mechanisms that contribute to the upkeep of our roads. We have also dedicated a section to address common concerns like potholes and how to report them to the relevant agencies. This guide includes resources and helpful phone numbers, ensuring you have access to the information you need.

Keep this guide handy for future reference, and please reach out to the appropriate departments if you have questions or require further information.

 **Comprehensive Plan**
www.wentzvillemo.gov/CompPlan

 **Thoroughfare Plan**
www.wentzvillemo.gov/ThoroughfarePlan

 **Capital Improvement Plan (CIP)**
www.wentzvillemo.gov/CIP

Meet Our Award-Winning Team



As the City strengthens its position as a regional transportation leader, current and future City projects promise to be good candidates for additional awards. The engineering team incorporates the Board of Aldermen's Critical Success Factors — becoming a regional destination, delivering superior City services, promoting economic vitality, ensuring safety and inclusivity, and enhancing infrastructure connectivity — into the planning, design and construction of each major project. These principles not only guide the City's project execution but also ensure each project supports both immediate functional needs and broader strategic objectives, promoting a thriving and sustainable urban environment. This approach has enabled the City to consistently

exceed the high standards recognized by industry awards, fostering long-term urban prosperity. A prime example is the David Hoekel Parkway Phase 2 project, which won the 2022 American Public Works Association "Project of the Year" Award for Transportation Over \$3,000,000. This project featured a new interchange with Interstate 70 and involved comprehensive efforts in permitting, design, and construction from 2014 to 2022, showcasing effective collaboration among St. Charles County, Missouri Department of Transportation (MoDOT) and the City of Wentzville. Current projects promise to be good candidates for additional awards as the City continues to establish itself as a regional leader in transportation improvements.



Whose Road is That?



View the Interactive Map!

www.wentzvillemo.gov/InteractiveMap

Understanding Road Ownership and Maintenance

It's important to know whether a road belongs to the City, St. Charles County or MoDOT. This knowledge helps you understand who to contact for maintenance concerns and provides insight into how services such as snow plowing are coordinated. To help you identify a road's owner, you can access our interactive map using the QR code above.



City of Wentzville Roads

More than 360 lane miles of City-owned roads in Wentzville, including those in residential neighborhoods and commercial areas, are maintained by the City's Public Works Department. Send an email to PotholeConcern@wentzvillemo.gov to report maintenance issues or repairs on City-owned roads. During winter weather events, snow routes are pre-assigned, and plow trucks work diligently to clear the roads. To report snow concerns on City streets, please send an email to SnowConcern@wentzvillemo.gov.



St. Charles County Roads

St. Charles County owns and maintains certain roads within Wentzville that serve as connectors between cities and regions. For concerns or repairs on County-owned roads, visit the St. Charles County RequestTracker website at www.sccmo.org/RequestTracker.aspx.



Missouri Department of Transportation (MoDOT) Roads

MoDOT is responsible for major highways, interstate and state routes passing through Wentzville. This includes lettered routes such as Highway A and Z. Report concerns or repairs related to MoDOT roads through its website at www.MoDOT.org/RoadConcern.

Roadway Funding

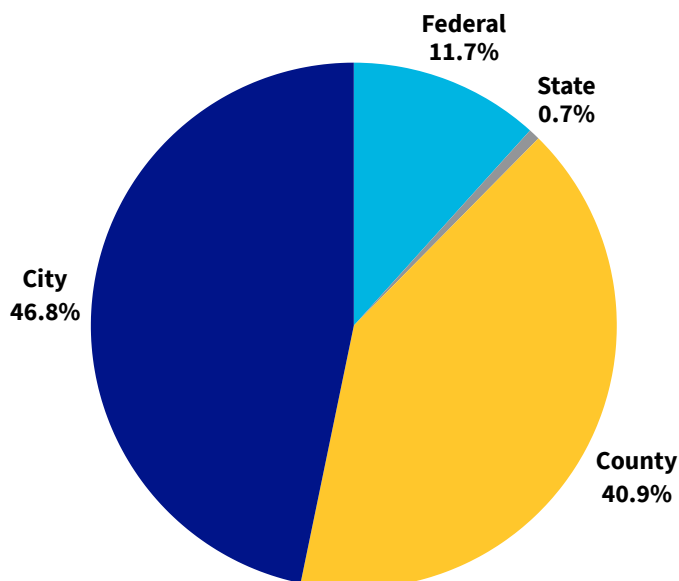


Watch the Budget Video!

www.wentzvillemo.gov/YouTube

The City has allocated approximately **\$23 million** for transportation improvements in its CIP for 2024 for projects ranging in scope from sidewalk extensions to highway reconstruction. These improvements are necessary to create and maintain the infrastructure needed by a growing and developing city like Wentzville.

The City does not fund its transportation improvements by itself. Instead, the City receives significant assistance from county, state and federal programs. As shown in the chart to the right, outside sources will fund more than half of this year's transportation improvement program. This sort of intergovernmental cooperation is essential for the City to provide a high-quality transportation network.





Project Timelines

Transportation projects are crucial for keeping Wentzville a connected and vibrant community, and the City’s professional staff is committed to bringing these projects from concept to reality. These projects range greatly in scope and complexity — from street and sidewalk maintenance to the widening of a state highway — but all projects typically follow a multistep process that can take five years or more to complete. As described below, this process aims to provide the City’s residents with long-lasting infrastructure that provides the most benefit for the City’s budget.

1 Planning

Planning is critical for the success of such a rapidly growing community. Project planning begins with the City’s comprehensive plan and thoroughfare plan that help establish the City’s long-term transportation goals. These broad objectives, emerging needs, and funding or development opportunities each play a significant role in how the City’s projects are prioritized.

2 Funding

Once a project has been identified as a priority, the City needs to find a way to pay for it. Transportation improvements generally require significant investment, and the City has been fortunate to secure funding assistance from county, state and federal programs. Because some of these funding programs involve specific schedules, funding and planning are often intertwined.

3 Design

The design phase is when the City and its consultants determine how to best meet the project’s goals within the budget and schedule that have been established for the project. This is rarely an easy task, as this involves creating the plans and specifications to accurately describe how the project is to be built. Multiple years may be needed to complete this phase. Skilled professionals are needed to find solutions that meet the needs of motorists, pedestrians, utilities and adjacent property owners. Therefore, the City uses a qualifications-based selection process to ensure that the most qualified teams are working on the City’s projects.

4 Acquisition

In accordance with the City’s Thoroughfare Plan and Municipal Code, much of the land used for transportation projects has been dedicated to the City as right of way through development. Not all projects fit within this right of way, and the City must work with adjacent property owners to secure the right of way and easements needed for a project. This stage can be complicated and can take several months or years to complete. To learn more about the Thoroughfare Plan or Municipal Code, visit the City’s website.

5 Construction

Although this stage of the project is highly anticipated, construction may cause inconveniences for motorists and residents nearby. While some disruptions are unavoidable, the City strives to minimize them through careful planning, detailed design, high standards and professional construction contract management.

The construction phase is where the transportation project visibly takes shape, serving as the light at the end of the tunnel. During this time, the community can see their investment come to life, with the promise of improved infrastructure and enhanced connectivity on the horizon.

Project Previews

Check out these brief transportation project descriptions. More information can be found at www.wentzvillemo.gov/ProjectUpdates.



David Hoekel Parkway (DHP)

Status: Phase 2D - under construction; Phase 3 - in design.

Overview: Two phases of the David Hoekel Parkway project are currently in progress. Phase 2D, which is currently under construction, will extend a two-lane section of DHP north from West Pearce Boulevard to West Meyer Road. Once complete in late 2024, it will transform transportation connectivity in western Wentzville. DHP Phase 3 is an ambitious project to complete a continuous outerbelt roadway from Interstate 70 (I-70) to Highway 61. The Phase 3 project is currently in the design phase. This project will extend DHP north from West Meyer Road to Scotti Road, then northeast to intersect with Peine Road just west of Highway 61. Together, these projects will create the arterial roadway needed to provide safe vehicular and pedestrian connectivity for Wentzville's western and northern portions.



Wentzville Parkway South

Status: Phase 1 - complete; Phase 2 - in design/acquisition.

Overview: The Wentzville Parkway South project is a significant infrastructure initiative aimed at improving the transportation system in Wentzville. Phase 1 of the project involved interchange improvements at Wentzville Parkway and I-70 that eliminated a traffic signal and introduced the new roundabout, both of which optimized traffic flow and enhanced safety. The Phase 1 project also eliminated a ramp onto I-70, which needed to occur prior to MoDOT's future "S-Curve" improvements. Phase 2 will extend Wentzville Parkway south over the railroad tracks to Interstate Drive. This project will eliminate the need for motorists and pedestrians to cross the railroad tracks to get to and from Interstate Drive, which will create a safer, easier connection for the south side of Wentzville. Construction of Phase 2 is expected to begin in late 2024.



Highway Z

Status: Interstate Drive at Highway Z Intersection Widening - under construction; Highway Z widening - in design.

Overview: Growth along Highway Z has challenged the capacity of this once rural highway. The City has two projects underway to improve both safety and traffic congestion along Highway Z. The first involves the reconstruction and widening of the intersection of Interstate Drive at Highway Z. This project will allow cars to move through this intersection more efficiently. The second project involves reconstructing Highway Z between Interstate Drive and Perry Cate Boulevard as a four-lane roadway. This project will include the replacement of the Highway Z bridge over Peruque Creek, with construction anticipated to begin in 2026. Once complete, these two projects will provide needed traffic relief to southern Wentzville.



I-70/"S-Curve" Improvements

Status: In design.

Overview: MoDOT has taken on a significant project to expand I-70 to three lanes in each direction between Wentzville and Blue Springs and to make related improvements to I-70. In Wentzville, that will include the replacement of the I-70/US-64/40 interchange and the widening and realignment of I-70 to soften the "S-Curve." More details about this project can be found at www.modot.org/ImproveI70.

Drone photos courtesy of Steve Jett.

Stay informed on
commonly asked
questions, all in
one place!

In The Know



Annual Slab Replacement

In response to resident input, the City's elected officials have continued to focus their attention on the annual street maintenance program. The City annually reviews pavement conditions and develops a slab-replacement program designed to address deteriorated pavement and to improve the City's streets. City staff performs field inspections and uses GPS equipment to identify the street segments that are in the worst overall condition within the City. Engineering staff use this information to develop a program that focuses on streets and subdivisions that are in poor condition, and that considers safety, coordination needs and opportunities that would make certain repairs a priority. Residents are encouraged to use alternative routes around the construction zone whenever possible. Slab replacement project updates can be found at www.wentzvillemo.gov/SlabReplacement.



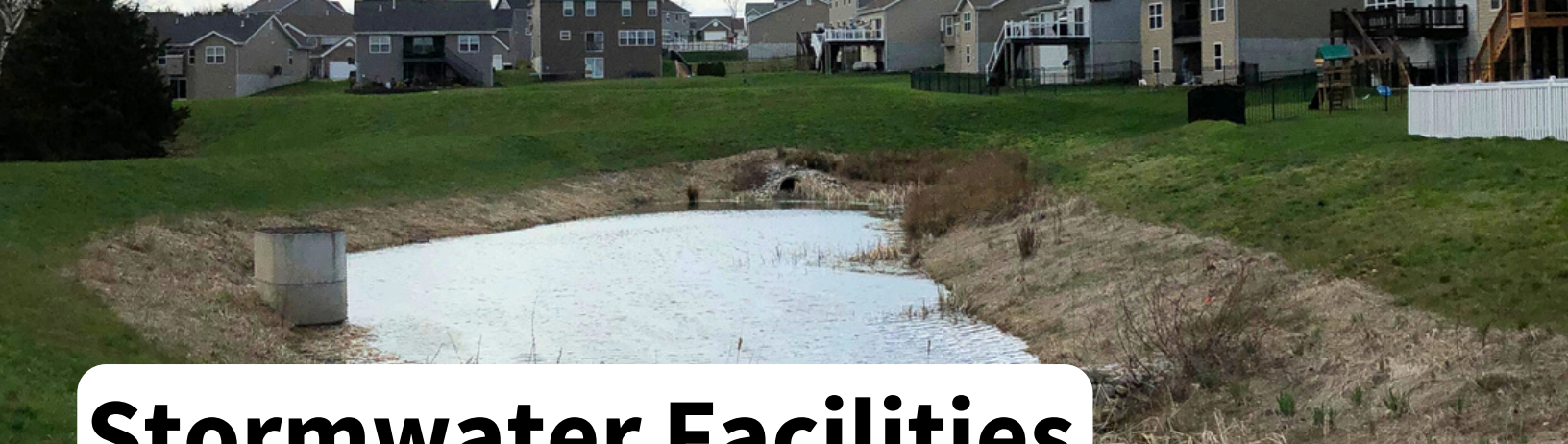
Pothole Formation

Potholes are annoying road hazards that can cause bumpy rides. They form when water seeps into tiny cracks in the road's surface. During colder weather, this water freezes and expands, creating larger gaps. When the ice melts, the weakened pavement collapses under the weight of traffic, forming a hole. The continuous cycle of water infiltration, freezing, melting and traffic pressure worsens the pothole over time. Maintenance crews work to fill potholes to ensure smoother and safer roads for drivers. It is important to make sure pothole concerns are directed where they need to go! Use the resources above to report potholes for swift and effective maintenance to the correct entity. Report a pothole online at www.wentzvillemo.gov/ConcernCenter.



Precautionary Boil Advisory

When there is a concern about public water safety, the City of Wentzville may issue a Precautionary Boil Advisory. Although rare, a Boil Water Order is issued by the Missouri Department of Natural Resources (MoDNR). A precautionary boil water advisory is issued when the conditions are present for a potential problem with the water, but a problem has not yet been officially confirmed. These are most commonly issued for water main breaks or other low-pressure events where water loss was not controlled and the possibility of a problem may exist. The City will share any water emergency information with residents on the City's website, Facebook and X (formerly Twitter) pages and via WIND. Residents can also use the water outage map at www.wentzvillemo.gov/WaterOutageMap.



Stormwater Facilities

Types of Stormwater Facilities: Detention, Retention and Water Quality



Detention Basins

Traditional basins fill and drain to temporarily detain stormwater and release it at a reduced rate for flood control only. Annual inspections are recommended to function properly. Routine maintenance for compliance generally includes litter pickup and mowing.



Retention Basins (Ponds)

Typically, these permanently hold water as an amenity, and detain and release additional flows at a reduced rate for flood control. Annual inspections and maintenance are recommended for proper function. Newer ponds (built after 2008) may also be water quality facilities that require an annual inspection and routine maintenance.



Water Quality Facilities

Newer water quality basins/facilities are also designed to filter pollutants from runoff after development per the Clean Water Act. A recorded Stormwater Facility Maintenance Covenant outlines owner responsibilities. In addition, an Operation and Maintenance Plan guides maintenance needs specific to your site. Property owners are required to submit an annual inspection to the City. Visit the City's Stormwater page for details at www.wentzvillemo.gov/Stormwater.



Helpful Reminders!

1. Refrain from entering a basin in high water or to remove blockages. If you have concerns, please contact the Stormwater Division.
2. Only rain down the drain! Discharges other than stormwater, such as paint, trash, auto fluids, soap, animal waste and excessive mud or yard waste are not allowed in storm drains, which lead into and can pollute our waterways.
3. Use native plants in and around basins. This helps reduce long-term maintenance costs, improves water quality and turns stormwater facilities into community assets. Providing trees and native landscaping along streams and lakes can also increase property value, shade and habitat.

Ownership and Maintenance

Generally, the City owns and maintains public infrastructure (i.e. residential piped infrastructure, including repair or blockage removal). Property owners are responsible for private infrastructure and grounds maintenance (i.e. mowing, removing weeds, sediment and trash, or pond dredging).

If you have questions about your facility type, maintenance or inspection requirements, please contact the Stormwater Division at (636) 327-5101. Staff can also provide an onsite visit or inspection training upon request.



Drones “Elevate” Efficiency

Have you noticed the City's Engineering Department using drone technology to improve our pavement inspection process? This technology allows us to streamline workflows, making our processes faster and safer.

Traditionally, ranking pavement slabs involved manually categorizing pavement conditions with a GPS-equipped utility task vehicle (UTV). Now, drones can capture detailed videos from above, reducing inspection times and keeping our staff safer by minimizing on-road UTV use. In suitable areas, our drone flies at safe heights to avoid obstacles and respect pedestrian spaces while adhering to FAA regulations.

We are thrilled about the interest in this new process as we continue leveraging advanced technology to maintain and improve Wentzville's infrastructure more efficiently!

Who to Call in Wentzville

Street Light Outage
(636) 639-2045

City Hall
(636) 327-5101

Stormwater Concern
(636) 327-5101

Report a Pothole
(636) 639-2121

General Concern Information
www.wentzvillemo.gov/ConcernCenter

Traffic Signal or Sign Concerns
(636) 327-5101

Construction Site Safety

Currently, the City has many active construction sites. It's important to remember that construction sites are off-limits for safety reasons. There have been reports of individuals entering these zones on foot, by bicycle and even using golf carts. We urge residents to inform their families and neighbors that, for their own safety and the safety of our workers, these sites are not accessible to the public at any time, including after hours or on weekends. Additional police patrols have been deployed to enforce this policy. We appreciate your cooperation and understanding.



**Remember, construction sites
are not open for public access!**