



# CITY SCAPE



**Your Roadmap to Transportation in Wentzville**

**Smarter  
Streets**

**Funding the Future  
of Transportation**

**Project  
Overviews**

# FOUNDATIONS for the Future!

With the success of last year's inaugural issue of *CityScope*, we laid the foundation for a more connected, informed and empowered Wentzville. This publication isn't just a collection of project updates — it's a reflection of our shared vision for the future of our City.

As Wentzville continues to grow, transportation and infrastructure projects remain among the most important — and most visible — investments we can make in our collective quality of life. From easing congestion to creating safer streets and improving access to schools, businesses and neighborhoods, these projects shape the way we live, work and move every day.

The purpose of *CityScope* is simple: to keep you informed and engaged. Our goal is to give you a clearer picture of how short-term construction translates into long-term progress. We want you to see the strategy behind the work zones, the impact behind the investments and the partnerships driving it all forward.

Inside this year's issue, you'll find updates on transformative efforts like the next phases of the David Hoekel Parkway, ongoing enhancements to the I-70 corridor and a look at the annual maintenance work that keeps our roads reliable year-round. You'll also learn how regional coordination and funding strategies are accelerating local progress — projects that were once just plans are now pavement.

Whether you're new to Wentzville or have lived here for decades, we hope this publication gives you not only insight but also a sense of pride. We understand that sometimes construction can create challenges and we appreciate your patience. Every sidewalk poured, widened road and reimagined intersection represents our commitment to long-range planning and building the connectivity foundation for the future.

**Please keep this guide handy for future reference.**



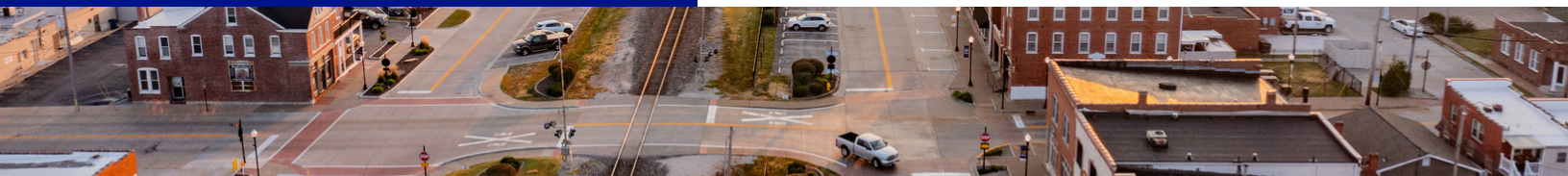
## Meet Our AWARD-WINNING Team

Behind every improved intersection, newly paved road and long-term infrastructure plan is a team of dedicated professionals working to move Wentzville forward. The City's Engineering and Public Works departments are made up of skilled individuals who bring expertise, innovation and a deep commitment to serving the community.

These teams do far more than design large-scale projects — they manage the everyday infrastructure that keeps our City running smoothly. From annual slab replacements and pavement inspections to stormwater management, road repairs and development plan reviews, their work touches nearly every part of Wentzville's built environment. They also coordinate closely with other City departments, contractors and agencies to ensure projects are efficient, cost-effective and sustainable.

Much of this work requires strong partnerships beyond City Hall. Wentzville's teams work hand-in-hand with St. Charles County, the Missouri Department of Transportation (MoDOT), utility providers and other regional partners to bring complex, multi-agency projects to life. That spirit of collaboration not only drives successful outcomes — it's one of the key reasons Wentzville continues to receive recognition for excellence in transportation and infrastructure planning.

Together, these teams are helping to build a safer, stronger and more connected Wentzville — one project at a time.



**View Our Commitment to Long-Range Transportation Planning at:**



## Whose Road is That?

Knowing who owns a road helps you direct concerns like pothole repairs or snow removal to the right place.

### City of Wentzville Roads

City-owned roads in Wentzville, including those in neighborhoods and commercial areas, are maintained by the City's Public Works Department. If you have a maintenance, repair or snow concern, visit [www.wentzvillemo.gov/ConcernCenter](http://www.wentzvillemo.gov/ConcernCenter).

### St. Charles County Roads

St. Charles County owns and maintains certain roads within Wentzville that serve as connectors between cities and regions. County road concern? Visit [www.sccmo.org/RequestTracker.aspx](http://www.sccmo.org/RequestTracker.aspx).

### Missouri Department of Transportation (MoDOT) Roads

MoDOT is responsible for major highways, interstate and state routes passing through Wentzville. This includes lettered routes such as Highway A and Z. Do you have a MoDOT concern? Please visit [www.MoDOT.org/RoadConcern](http://www.MoDOT.org/RoadConcern).

## Investing in Wentzville's Transportation Future

Over the last several years, the Board of Aldermen has provided clear direction on key priorities to ensure that Wentzville's roads, sidewalks and public spaces continue to support growth, safety and connectivity. A vital component of this effort is the City's Capital Improvement Plan (CIP), which outlines long-term infrastructure investments designed to enhance mobility, improve safety and accommodate future development. These strategic improvements help ensure that Wentzville's infrastructure keeps pace with the City's evolving needs while reinforcing a commitment to sustainable growth and enhanced quality of life.

### What Are Capital Improvements?

Capital improvements are physical enhancements to public infrastructure throughout Wentzville. These projects include the construction and improvement of streets, bridges, utilities, stormwater systems, parks and other essential public facilities. The CIP outlines the long-term vision for these investments, ensuring that Wentzville's infrastructure keeps pace with the needs of residents, businesses and visitors. Learn more and view the CIP at [www.wentzvillemo.gov/CIP](http://www.wentzvillemo.gov/CIP).

### Building a Stronger Wentzville

Through roadway expansions, intersection upgrades, pedestrian-friendly enhancements and revitalization projects, Wentzville is laying the groundwork for a more connected and accessible community. The City's investment in modern infrastructure, collaborative partnerships and proactive maintenance ensures that Wentzville remains a place where residents can travel safely and efficiently. As Wentzville continues to grow, so does the commitment to responsible planning, thoughtful investment and ongoing improvements. Every project — whether large-scale roadway construction or routine maintenance — plays a role in shaping the future of our City.

## From Planning to Pavement

*A well-planned transportation system is essential for a growing community like Wentzville. From roadway expansions to pedestrian-friendly infrastructure, each project follows a structured, multi-phase process to ensure safe and efficient travel for residents and visitors. This process begins with planning and funding, moves through design and land acquisition, and ultimately reaches construction — where improvements take shape. Each step plays a crucial role in ensuring projects are thoughtfully developed, properly funded and effectively implemented. By investing in its transportation network, Wentzville is paving the way for a more connected and accessible future.*

### PLANNING

Planning is critical for the success of such a rapidly growing community. Project planning begins with the City's Comprehensive Plan and Thoroughfare Plan that help establish the City's long-term transportation goals. These broad objectives, emerging needs, and funding or development opportunities each play a significant role in how the City's projects are prioritized.

### FUNDING

Once a project has been identified as a priority, the City needs to find a way to pay for it. Transportation improvements generally require significant investment, and the City has been fortunate to secure funding assistance from county, state and federal programs. Because some of these funding programs involve specific schedules, funding and project timelines are often intertwined.

### DESIGN

The design phase determines how to meet project goals within the established budget and schedule. This complex process involves creating detailed plans and specifications, often taking years to complete. Skilled professionals balance the needs of motorists, pedestrians, utilities and property owners. To ensure quality, the City uses a qualifications-based selection process to hire the most qualified teams.

### ACQUISITION

Per the City's Thoroughfare Plan and Municipal Code, much of the land for transportation projects is dedicated as right of way through development. When additional land is needed, the City works with property owners to secure right of way and easements. This complex process can take months or years.

### CONSTRUCTION

Construction brings progress, but it can also inconvenience motorists and residents. While some disruption is unavoidable, the City works to minimize impacts through careful planning, detailed design, and strong contract management. This phase is when the project visibly takes shape, delivering improved infrastructure and connectivity.

# Maximizing Transportation Funds

The City has allocated approximately \$45 million in its 2025 Capital Improvement Plan (or CIP) for transportation enhancements, ranging from sidewalk expansions to major highway reconstruction. These improvements are essential to maintaining and expanding Wentzville's infrastructure to meet the needs of a growing city. Ensuring a well-connected and dependable transportation system remains a top priority. The City does not fund these projects alone — as shown in the pie chart, more than half of this year's transportation improvements will receive financial support from county, state and federal sources. These strategic partnerships allow Wentzville to maximize local tax dollars, complete necessary upgrades and prevent delays in critical infrastructure improvements.

With continued development and increasing traffic demands, enhancing mobility and safety for residents and businesses is vital. The Board of Aldermen remains committed to forward-thinking planning and responsible stewardship to keep Wentzville thriving. These transportation projects align with the Board's Critical Success Factors.

These Critical Success Factors guide the City's growth and development:

- Infrastructure Connectivity – Optimized traffic systems, pedestrian-friendly amenities and reliable utilities enhance quality of life.
- Regional Destination – Responsible financial management ensures long-term community value.
- Economic Vitality – Strong partnerships, development opportunities and a skilled workforce support business growth.
- Safe and Welcoming Community – A well-planned built environment and diverse services foster safety and inclusivity.
- Exceptional City Services – Industry-leading services ensure responsible resource management.

Through strategic investment and collaboration, Wentzville is paving the way for a more connected, accessible and vibrant future.

## Connecting Dollars to Services



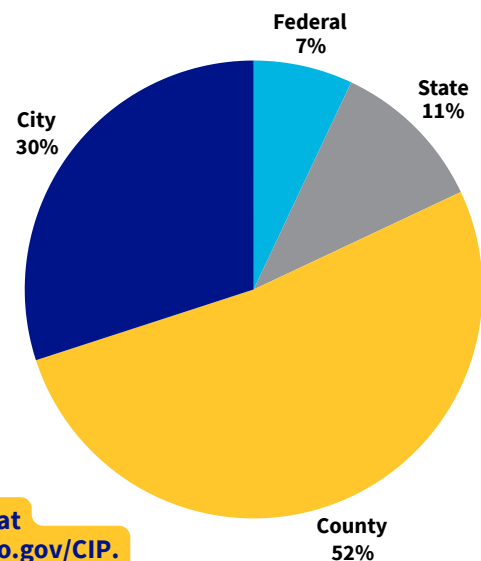
### Where Does the Money Come From?

- **Taxes:** The majority of the City's revenue, 37%, is generated by taxes levied on property, retail sales and the gross receipts tax on the sales of electricity, gas, telephone and television video services.
- **Intergovernmental Revenues:** Represents 25% of the City's revenues and includes the receipts from federal, state and county grants, with the majority for Transportation Fund road projects.
- **Charges for Services:** This includes parks and recreation fees, water, sewer, solid waste and administrative services. This is 24% of City revenue.
- **Licenses and Permits:** Examples include building permits, engineering permits and business licenses. This accounts for 2% of City revenue.
- **Miscellaneous:** Proceeds from equipment sales, contracted police services to local schools, etc., account for 1% of City revenue.
- **Fines and Forfeitures:** These are collected by Municipal Court and account for .5% of City revenue.
- **Investment Income:** Revenue earned from investments of idle City funds throughout the year and generates .5% of City revenue.

### Where Does the Money Go?

- |                         |                        |
|-------------------------|------------------------|
| • General Government    | • Parks and Recreation |
| • Public Works          | • Transportation       |
| • Engineering           | • Capital Outlay       |
| • Community Development | • Debt Service         |

### CIP Project Funding Breakdown for 2025

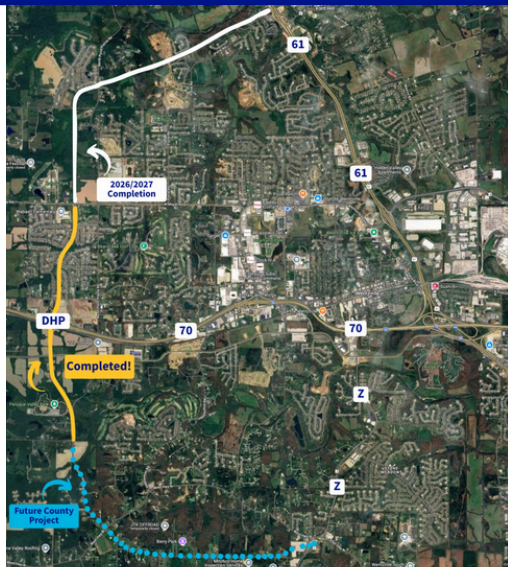


Take a look inside at [www.wentzvillemo.gov/CIP](http://www.wentzvillemo.gov/CIP).



# Project Previews

Check out these brief transportation project descriptions. More information can be found at [www.wentzvillemo.gov/ProjectUpdates](http://www.wentzvillemo.gov/ProjectUpdates).



## David Hoekel Parkway (DHP) Phase 3

- DHP Phase 3 Project begins at West Meyer Road and extends approximately 3.25 miles north to Peine Road.
- The new roadway will consist of two traffic lanes with a curb and gutter and a multi-use pathway on one side (for pedestrians and bicyclists).



## Wentzville Parkway South Phase 2 (I-70 to Interstate Drive)

- The Wentzville Parkway South (WPS) Phase 2 improvement project will build upon the WPS Phase 1 project by extending WPS to Interstate Drive.
- The proposed roadway will include a two-lane cross-section with curb and gutter and curb inlets along the east side of the roadway and an improved shoulder on the west side that will drain to an open ditch system. This will allow for future expansion to a five-lane cross-section when traffic demands call for it.
- The proposed project also proposes to build a 10-foot-wide sidewalk along the east side of the roadway that will connect to the recently constructed Interstate Drive trail.



## WENTZVILLE PARKWAY TURN LANE PHASE 2A: Lane Closures Through Late Fall

Full pavement replacement and widening between Meyer Road and Parkway Ridge Boulevard are underway. Learn more in the “Project Updates” link above.



## Route Z Widening (Interstate Drive to Perry Cate Boulevard)

- This project will widen Route Z to a four-lane roadway south of Interstate Drive to Perry Cate Boulevard, with dedicated left-turn and right-turn lanes at key side streets.
- Associated with this widening is also the widening/replacement of the bridge over Peruque Creek to accommodate the four-lane cross-section and the extension of a multi-use trail.

## Smarter Streets: How Access Management Keeps Wentzville Moving

Ever wonder why some streets flow better than others? It's not just luck — it's called access management, and it plays a big role in how traffic moves through Wentzville.

Access management helps preserve the flow and safety of major roads like Wentzville Parkway, DHP and Interstate Drive by carefully planning where driveways, intersections and traffic signals go. Planning starts early in the development process — during zoning and subdivision reviews — to help prevent traffic backups and reduce crash risks. Wentzville also encourages cross-access between neighboring properties, like connecting parking lots or stub streets, so drivers can move between businesses or neighborhoods without always using major roads. Fewer turns and stop-and-go movements mean safer, smoother trips for everyone.

The City's Engineering Design Criteria guides this process by setting standards based on roadway type and traffic volume — all designed to keep traffic flowing efficiently, even when construction projects may temporarily slow things down.

## The Power of Traffic Studies

Traffic studies are a critical part of planning and improving transportation infrastructure. They help the City of Wentzville make data-driven decisions by analyzing current traffic patterns, vehicle speeds, volume and safety concerns. These studies provide insight into how roads are being used, identify potential problem areas and help determine whether changes are needed. By using this information, the City can prioritize projects, improve traffic flow, enhance safety for drivers and pedestrians, and ensure that infrastructure investments align with current and future needs.

## Timing the Build Right

In Wentzville, roads and infrastructure are carefully planned many years in advance and then built when projects are fully funded. This means our roads grow with the City — not far ahead of it. This approach ensures that public funds are used efficiently and that roads are built where and when they're truly needed. By aligning construction with actual development and demand, taxpayers avoid the high cost of maintaining underused infrastructure while still supporting our growing community with safe, reliable roads.

Stay informed on commonly asked questions, all in one place!

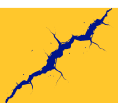
# In The Know



## PAVING THE WAY

### Annual Slab Replacement

This year's annual Slab Replacement program is well underway! This program is a part of our continued effort to improve street conditions across Wentzville. This year, we placed an emphasis on proactive outreach through the Paving the Way initiative, which includes recognizable marketing materials, consistent messaging and multiple touchpoints to ensure residents are well-informed about upcoming work in their areas. Notifications now include a mailed postcard, yard stakes, neighborhood entrance signage, targeted email reminders and Nextdoor post notifications. Questions? Visit [www.wentzvillemo.gov/SlabReplacement](http://www.wentzvillemo.gov/SlabReplacement).



## Pothole Formation

Potholes are pesky road hazards caused by water seeping into cracks, freezing, expanding and eventually weakening the pavement. As traffic passes over these spots, the surface collapses, creating holes that grow over time. Crews work to repair potholes quickly to keep roads safe and smooth. To report potholes to the right agency, use the resources on page three or online at [www.wentzvillemo.gov/ConcernCenter](http://www.wentzvillemo.gov/ConcernCenter).



## Precautionary Boil Advisory

The City of Wentzville may issue a Precautionary Boil Advisory when conditions suggest a potential issue with water quality — typically after a water main break or low-pressure event. These advisories are precautionary and not confirmations of contamination. A Boil Water Order, though rare, is issued only by the Missouri Department of Natural Resources. As needed, water emergency updates are shared on the City's website, Facebook, X and via WIND alerts. Residents can also check the water outage map at [www.wentzvillemo.gov/WaterOutageMap](http://www.wentzvillemo.gov/WaterOutageMap).



## Concrete Cure Time

With all the road work happening in Wentzville, you might notice freshly paved areas that look finished but still have cones or barricades in place. Concrete needs time to cure properly, even if it appears ready to drive on. This invisible part of the process is critical. Driving on the new surface too soon can lead to cracks, damage or long-term weakening of brand-new pavement. Allowing the proper cure time helps ensure lasting, high-quality roads across our community.

## Your Role During Snow Events

When winter weather hits, our snowplow crews work hard to keep Wentzville's roads safe and passable for everyone. While our team clears streets as efficiently as possible, there are a couple of important ways residents can help during and after a snow event:

**Reduce Street Parking:** Keeping your road clear of parked cars makes it faster and easier for our plow drivers to clear a path. While parking on a public roadway is only illegal during a snow emergency, please consider keeping vehicles out of the way during winter weather events.

**Clearing Your Driveway:** As plows move snow off the road, some snow may end up at the end of driveways. We understand this can be frustrating, especially if it happens more than once. Unfortunately, it's an unavoidable part of keeping roads clear and accessible for emergency vehicles. When available, the Wentzville Fire Protection District offers snow removal from driveways and sidewalks for senior or disabled residents. Learn more at [www.wentzvillemo.gov/WFPDSnowRemoval](http://www.wentzvillemo.gov/WFPDSnowRemoval).

**Fire Hydrants:** If there's a fire hydrant near your home, residents should clear snow around it. A visible, accessible hydrant is necessary to save valuable time in an emergency.

## Concrete vs. Asphalt

Concrete is the standard material used for new roadways in Wentzville because it lasts longer, is more durable and requires less maintenance than asphalt. This means concrete is the most cost-effective long-term solution for constructing transportation infrastructure.

In general, we maintain streets using the same material they were originally built with. The most notable exception to this is when asphalt patches are used on concrete roads — these are temporary repairs that help minimize travel disruptions while preserving the road until full reconstruction can occur.

In recent years, the City's Board of Aldermen has expanded the pavement replacement program budget by over 30%, helping us restore more streets with reliable, long-lasting materials.

# Beyond the Grates

## Stormwater Updates, Events and More!

Check Out the Stream Care Guide  
at [www.wentzvillemo.gov/SCG](http://www.wentzvillemo.gov/SCG)



## Did You Know?

### Riparian Buffer Benefits and Tree Seedlings

Stream corridors, or riparian buffers, are important for protecting our waterways. They are the last line of defense against pollution in our local streams.

A riparian buffer is an area of land that connects aquatic ecosystems to drier upland areas. They are filled with trees, shrubs, grasses and forbs. The vegetation in a riparian buffer moderates water and air temperatures, provides habitat and is a food source for aquatic and land-dwelling animals. It also protects against erosion and flooding. Riparian buffer preservation is essential to preserve water quality. The City of Wentzville has recognized the importance of riparian areas by adopting an ordinance in 2008 that requires a riparian buffer preservation for new construction sites.

Are you looking to enhance a riparian buffer or a natural area? Naturally occurring riparian plants include: willows, sycamore, river birch, cottonwood, bald cypress, buttonbush, common elderberry, mist flower, cardinal flower, blue lobelia and various grasses and sedges. You can order seedlings of these plants and more on the Missouri Department of Conservation's website at [www.wentzvillemo.gov/OrderSeedlings](http://www.wentzvillemo.gov/OrderSeedlings).

## Improving Peruque Creek

Peruque Creek is listed on Missouri's 303(d) List of Impaired Waters due to nonpoint source pollution. This type of pollution originates from rainwater runoff that flows over streets, yards and fields. It picks up oil, soil, soap, pet waste, fertilizers and more and reduces the quality of the waterway for recreation and wildlife habitat.

To address the impairment, the Missouri Department of Natural Resources (MoDNR) has drafted a Total Maximum Daily Load (TMDL) plan, which sets pollution limits; specifically for Total Suspended Solids, which includes tiny particles of sediment and organic matter suspended in water. These particles can cloud the water, reduce oxygen levels and disrupt aquatic habitats.

MoDNR is also working with Wentzville and others on a Nine-Element Watershed Plan. Unlike the TMDL, this non-regulatory plan serves as a roadmap for local groups, such as the Peruque Creek Watershed Alliance, for improving water quality across the watershed. Once approved by the Environmental Protection Agency, the plan will open the door to federal funding for restoration projects addressing pollution concerns.



## Peruque Creek Watershed Alliance

The City of Wentzville has joined forces with the newly reformed Peruque Creek Watershed Alliance (PCWA), marking a significant step toward enhancing local environmental stewardship and community engagement. This collaboration underscores the City's commitment to preserving the health and vitality of the Peruque Creek watershed, which plays a key role in the region's ecosystem. If you're interested in participating in PCWA events, including water quality data collection via Stream Team, or receiving additional information about other ways to get involved, sign up for the PCWA email list at [www.wentzvillemo.gov/PCWAEmailList](http://www.wentzvillemo.gov/PCWAEmailList).

## Mission: Clean Stream Success!



*We are so thankful for all of our volunteers and their dedication to keeping our community clean. This year, 68 volunteers collected 1,100 pounds of trash! Start looking for 2026 registration for this event early next year.*

**Construction work is generally  
allowed during the following hours:**

**Oct. 1-May 31**

6 a.m. to 7 p.m., Monday through Friday

**June 1-Sept. 30**

6 a.m. to 9 p.m., Monday through Friday

8 a.m. to 5 p.m., Saturday

## Trash Travels Fast!

Small actions make a big difference in  
keeping our roads and waterways clean!  
Learn more at [www.wentzvillemo.gov/Litter](http://www.wentzvillemo.gov/Litter).



## Development-Driven Infrastructure

As Wentzville grows, the City continues to work closely with developers to ensure that new subdivisions and projects include the necessary utility infrastructure. This includes stormwater systems, road improvements and extensions for potable water and sanitary sewer lines. These improvements aren't optional — they're a required part of development and essential to building a well-connected, sustainable community. While installation costs are the builder's responsibility, the City may contribute funding to upsize utility lines if they are part of the planned distribution network for future growth areas.

## Who to Call in Wentzville



**Street Light Outage**  
(636) 639-2045

**City Hall**  
(636) 327-5101

**Stormwater Concern**  
(636) 327-5101

**Report a Pothole**  
(636) 639-2121

**General Concern Information**  
[www.wentzvillemo.gov/ConcernCenter](http://www.wentzvillemo.gov/ConcernCenter)

**Traffic Signal or Sign Concerns**  
(636) 327-5101

## Construction Site Safety

Currently, the City has many active construction sites. It's important to remember that construction sites are off-limits for safety reasons. There have been reports of individuals entering these zones on foot, by bicycle and even using golf carts. We urge residents to inform their families and neighbors that, for their own safety and the safety of our workers, these sites are not accessible to the public at any time, including after hours or on weekends. Additional police patrols have been deployed to enforce this policy. We appreciate your cooperation and understanding.



**Remember, construction sites  
are not open for public access!**