

Stormwater Management Program

2019-2020 MS4 Report Highlights
2021-2026 Permit Changes

Feb. 25, 2021

Background

- Municipal Separate Storm Sewer System (MS4)
 - Stormwater Management Program & Five-Year Plan (SWMP)
 - How does this impact me? How much does this cost?
- 2019-2020 MS4 SWMP Report due 2/28/21 (draft in agenda packet)
- 2021-2026 MS4 Permit Renewal - Comprehensive Permit
 - 30-day Public Notice of SWMP & Public Information Meeting, comments are due 3/2/21
 - Renewal Application due 4/3/21 (draft in agenda packet)
 - Revise Stormwater Management Program & Plan (SWMP), complete by 1/1/2022

Focus Areas

Public Education &
Outreach

Public Involvement/
Participation

Illicit Discharge
Detection &
Elimination

Construction Site
Stormwater Runoff
Control

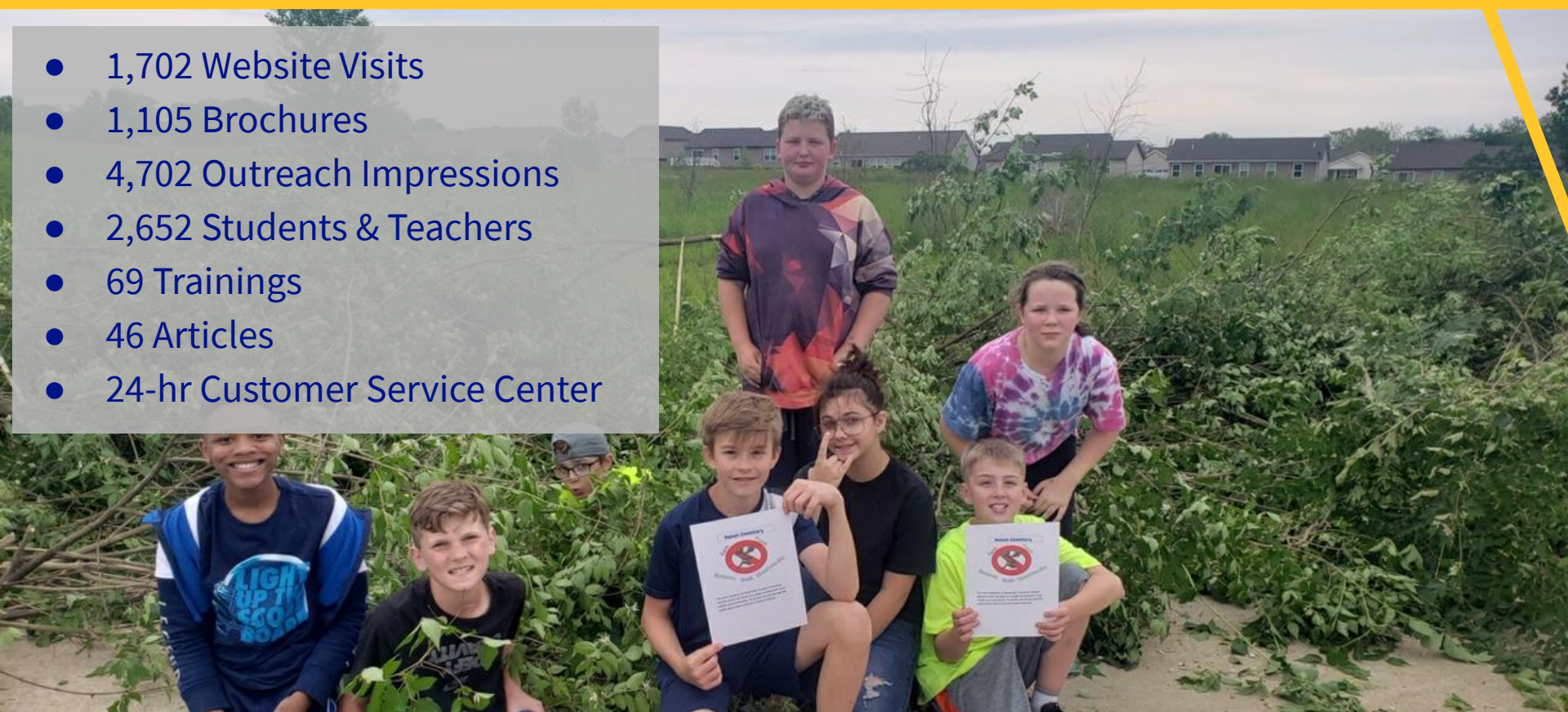
Post-Construction
Stormwater
Management

Pollution Prevention
for Municipal
Operations

2019-2020 Highlights

Education & Outreach

- 1,702 Website Visits
- 1,105 Brochures
- 4,702 Outreach Impressions
- 2,652 Students & Teachers
- 69 Trainings
- 46 Articles
- 24-hr Customer Service Center



2019-2020 Highlights

Public Involvement



- Stormwater Advisory Committee
- 12 Volunteer Opportunities
- 752 Volunteers (40% ↑)
- 4,058 lbs. of litter removed
- 495 Citizen Concerns

2019-2020 Highlights

Illicit Discharge Detection & Elimination

- Stormwater Pollution Control Ordinance
- Storm System GIS Mapping
- 7,748 Stormwater Inlets (60% ROW marked)
- 1,620 Stormwater Outfalls
- 301 Stormwater Facilities
- Priority Area 1-2 Field Screening
- 495 Citizen Concerns Tracked
- 22 Illicit Discharge Concerns
- 14 Trainings
- 28 Articles



2019-2020 Highlights

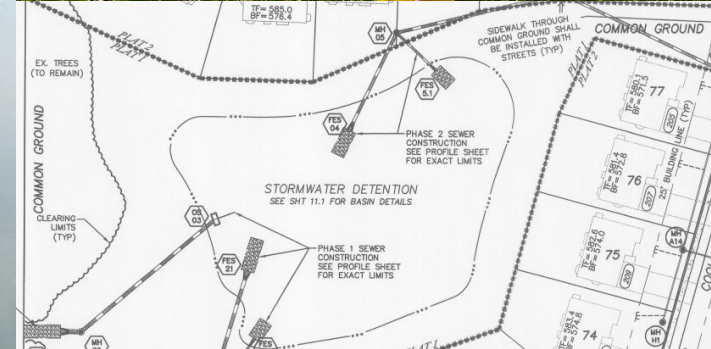
Construction Site Runoff Control

- Erosion & Sediment Control Ordinance
- 21 Pre-Construction Reviews
- 53 Active Construction Sites
- 38 Trainings
- 216 Development Inspections (372% ↑)
- 1,114 Inspections by Contractors (216% ↑)
- 3,991 Residential Lot Inspections
- 75 Sediment Concerns (40% ↓)

2019-2020 Highlights

Post-Construction Stormwater Management

- Post-Construction Ordinance
- 53 Site Plan Reviews
- Maintenance Covenants - O&M Plans
- 82 Inspections
- 119 Stormwater Quality Facilities
- 1.39M cu. ft. of Stormwater Runoff Treated
- Planned Growth Ordinances



2019-2020 Highlights

Pollution Prevention for Municipal Operations

- Operations & Maintenance Program
- 12 Trainings
- 118 Participants
- 22 Inspections
- 267.87 Tons of Street Sweeping Debris (290% ↑)
- 10.81 Tons of Salt Reduced (56% ↓)
- Maintenance Tracking in GIS

Quick Check-In

**How well do you understand the purpose of the
MS4 Permit and City's SWMP?**

Feedback

**Which SWMP activities impact our community
water quality the most?**

Go to www.menti.com and
use code 41 49 88 6



➤ Up Next - Permit Changes & New SWMP

Education & Outreach

- Target Audiences (select two more): Residents +
 - Developers/Construction Site Operators
 - Local Government Employees
 - Homeowners or Neighborhood Associations
- Targeted Pollutant for EACH Audience (may change annually)
 - Sediment
 - Oil, grease, fluids from vehicles
 - Litter, trash containment

➤ Up Next - Permit Changes & New SWMP

Education & Outreach

- Outreach Best Management Practices (select five):
 - Require Installation of Storm Drain Markers for all New Inlets
 - Maintain a Website
 - Publish Articles (two annually)
 - Promote/Host Educational Meetings, Seminars or Training (two annually)
 - Targeted Educational Campaigns (one annually)
- Public Involvement Best Management Practices (select three):
 - Stream Cleanups/Adopt-A-Spot (400 yards/2 miles)
 - Stormwater Speaker Series (two annually)
 - Yard Waste Collection/Street Sweeping



➤ Up Next - Permit Changes & New SWMP

Standard Operating Procedures

- MCM 3: Create a formal Illicit Discharge Removal & Enforcement SOP
- MCM 4: Modify the Development Inspection (SWPPP) SOP
- MCM 5: Adopt Post-Construction Inspection SOP for Stormwater Quality Facilities
- MCM 6: MS4 Waste Disposal SOP

Staff Training Expectations

- MCM 3: Routine & within 1 year for new hires
- MCM 4 & 5: Once within Permit Cycle
- MCM 6: Annually with a written schedule



Up Next - Permit Changes & New SWMP

Inspection Expectations

- Outfall Field Screening - At least 60% in permit cycle
- IDDE Priority Areas - Identify, screen and re-evaluate areas annually
- MS4 shall now require Developer/Contractor SWPPP Inspections
- Construction Site Inspections with Escalated Enforcement Policy
- SWQ Facility Inspections with Escalated Enforcement - During Construction, Before Final, Within 3 years; Annually by Owner; At least 60% in permit cycle

Feedback

What ways should the City involve the public & stakeholders in the development of the 2021-2026 SWMP?

Go to www.menti.com and
use code 41 49 88 6



Upcoming Municipal Projects

- Website Refresh
- E-Permitting
- Stormwater Grant Project
- Wentzville Community Center

- Transportation Projects
 - DHP Phase 2
 - Wentzville Parkway South
 - West Meyer Road Phase 3
 - Great Oaks Blvd Extension
 - Peine Road Safety Improvements
 - North Outer Road
 - Interstate and Hwy Z
 - Allen Street



Questions please
Jamie.Paige@wentzvillemo.gov

(636) 327-5102
bit.ly/wentzvillestormwater